



# EduExperts

Powered by Crimson

# Monthly Newsletter

JUNE 2021 | VOL. 6

## NEWS & FEATURES

### Outstanding student

PAGE 01

### Events & News

PAGE 02

### Special Course

PAGE 03

## OUTSTANDING STUDENT

Joe | EduExperts OneTreeHill Centre

### From the student:



Joe started learning chess with us from Term 1 this year. He has shown great interest and potential in chess. In the recent chess tournament, Joe scored two wins. From our chess classes, Joe learned different strategies, logic thinking and self-discipline. He always comes to our class with a great attitude, eager and ready to learn. We are immensely proud of what Joe has achieved in such a short time.

### From the teacher:

Joe is part of my advanced class at EduExperts One Tree Hill. He is among the few students that has the capability to construct strategies without the movement of the chess pieces. Joe is talented at chess and plays with strategic measures and thinks before he moves.

Regarding his tournament, it was his first time and he performed with outstanding colours. I hope Joe can continue his efforts and hard work.



 [eduexperts.co.nz](https://www.eduexperts.co.nz)  0800 462 338

 [eduexperts.nz](https://www.eduexperts.nz)  에듀익스퍼트

   [eduexpertsnz](https://www.eduexpertsnz.com)



# EVENTS & NEWS

- 1) EduExperts 1<sup>st</sup> Spelling Bee Competition
- 2) Upcoming events
- 3) Important Dates



## 1) EduExperts 1<sup>st</sup> Spelling Bee Competition

EduExperts held a very successful Spelling Bee competition for the first time on the 20th of June. A total of 60 students (Year 5-8) were invited to participate. A Spelling Bee is a competition in which contestants are asked to spell a broad selection of words, with a varying degree of difficulty. To compete, contestants must memorise the spellings of words as written in dictionaries, and recite them accordingly. The concept is thought to have originated in the United States, and spelling bee events, along with variants, are now also held in other countries around the world. Spelling bees are common only in countries where English is spoken, because other languages have a more predictable spelling system.

Congratulations to the winners: Daniel Fang, Shawn Zhou, Elise Huan, Dev Darji, Felicia Shen, Sam Qing, Ethan Wang, Michael Chen and Alvin Qu.

We will see you again next year.



EduExperts  
Powered by Crimson

# SPELLING BEE

20 June 2021



## 2) Upcoming events

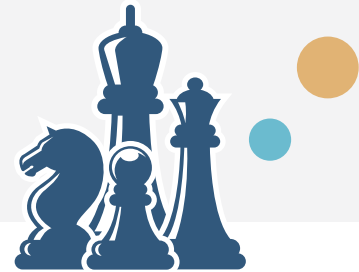
EduExperts 2nd English Competition:  
15th August (Invitation coming soon)

## 3) Important Dates

EduExperts Term 2 finish: 10th July  
EduExperts Term 3 start: 26th July  
EduExperts Holiday Program: 12th – 23rd July

## SPECIAL COURSE

### - Chess Power course



The wonderful game of chess continues to grow in popularity around the world with countries beginning to incorporate it into their school curriculums. This is largely due to the fact that it is a game that has a number of proven benefits. It improves concentration and develops logical thinking, memory, imagination and creativity. It improves school work and results in a range of subjects. In science it develops a scientific approach to thinking and analysing and enables students to predict outcomes and interpret results. In maths, it improves one's ability to calculate without a machine and to use spatial awareness to visualise movement. In art, the imagination is awakened as pictures are painted in one's mind exploring the endless possibilities on the 64 squares. Chess is also very beneficial in other areas as it teaches independence and self-motivation and develops the capability to predict and foresee consequences of actions.

The Coaching Programme starts kids on the path to learning chess in a well-structured and positive learning environment. It consists of a well organised Chess Curriculum which takes kids from not knowing anything about the game, right through to advanced concepts. Each lesson begins with an interesting story about chess wrapped around a specific topic. The story fascinates the kids and ensures their focus and attention span is maintained. We introduce a new topic and take students through the topic starting simply and then applying more complexity. The kids then pair up and practise the topic they have just learnt, guided by their Chess Coach. The kids then participate in a tournament game. They play each-other whilst our coach provides support and feedback. From the very first lesson, they follow all the rules of chess that are used in official chess.

Each lesson builds on the last to ensure continual learning. The curriculum is organised in a way that ensures kids learning of chess is fast and progressive. We have found that within a single term, students are ready to compete in our cluster school tournaments and the Sarapu Cup.

We encourage you to get involved as chess is a game for all ages and rewards hard work with success!